

Specifications

Thickness: 0.25mm
 Material: Brass / Phosphor Bronze
 Wire Range: AWG #18~24
 Insulation O.D.: 2.8-1.4 mm
 Finish: Pre. Tin-Plated
 Qty / Reel: 6,000 pcs

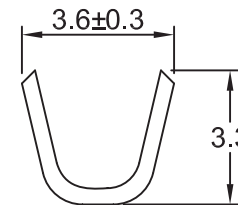
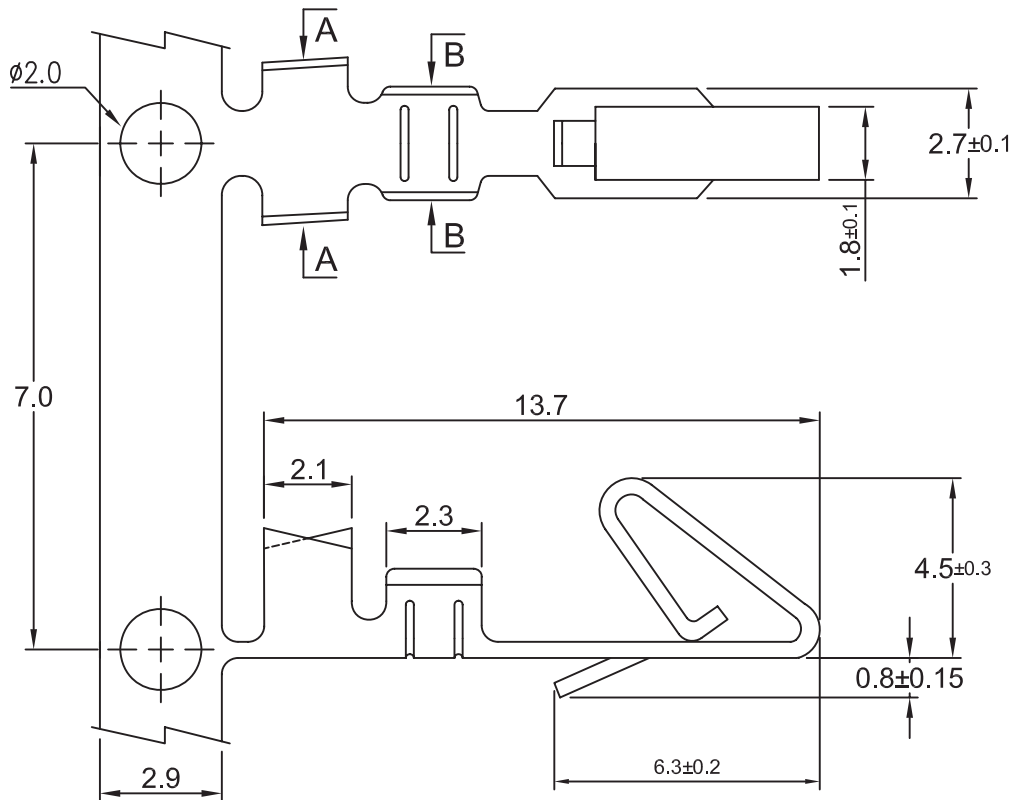
Part Numbering System

W396 T

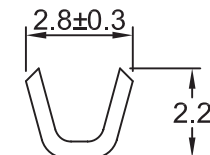
Series

Function

T = Terminal



Section A-A



Section B-B

General Tolerance	
X. ± 0.50	X. $^{\circ} \pm 5^{\circ}$
.X ± 0.20	.X $^{\circ} \pm 2^{\circ}$
.XX ± 0.10	.XX $^{\circ} \pm 1^{\circ}$
Units : mm	